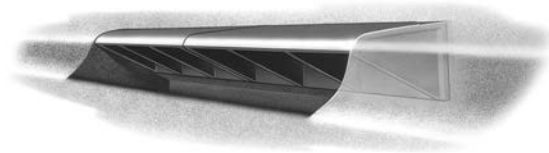
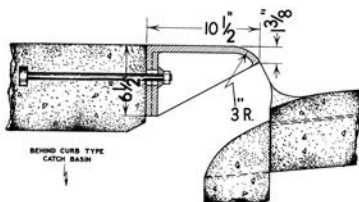


R-3233-A**Combination Inlet Drain****Heavy Duty**

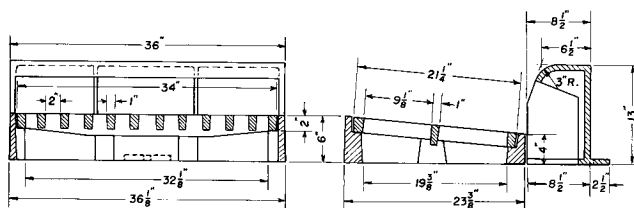
Multiple sections usually furnished in heavy drainage areas. Concrete catch basin constructed behind curb, using **R-6040**. Behind-the-curb manhole illustrated with **R-3469**.

Not recommended for use in areas where large gutter trash objects are prevalent. Curb

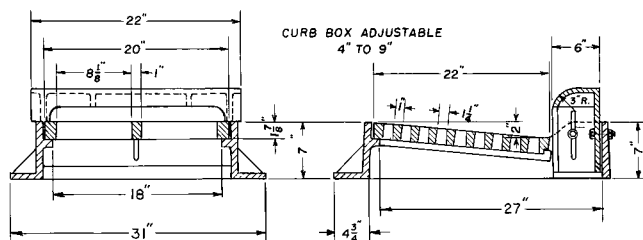
opening, without gutter grate, allows large trash to enter catch basin and clog lines.

7/8" diameter anchor bolts furnished by others.

Can be used either single or in combination as shown.

R-3233-D**Large Combination Inlet Frame, Grate, Curb Box****Heavy Duty**

CATALOG NUMBER	GRATE TYPE	SQ. FT. OPEN	WEIR PERIMETER LINEAL FEET
R-3233-D	A	2.8	6.4

R-3234-B1**Combination Inlet Frame, Grate, Curb Box****Heavy Duty**

Standard Grate (shown): Type A

Alternate Grate(s):



Type R

CATALOG NUMBER	GRATE TYPE	SQ. FT. OPEN	WEIR PERIMETER LINEAL FEET
R-3234-B1	A	1.1	5.3
R-3234-B1	R	1.4	5.3